

For more information or for application forms contact:

John Ford, CEA-Ag
Kleberg-Kenedy Counties
P O Box 1119
Kingsville, TX 78363-1119
361/595-8566
fax: 361/592-7741
je-ford@tamu.edu

or

Dr. Randy Stanko, Associate Professor
Dept of Animal & Wildlife Science
Texas A&M University-Kingsville
700 University Blvd, MSC 228
Kingsville, TX 78363
361/593-2124
fax: 361/593-3788
r-stanko@tamuk.edu

Individuals with disabilities who require auxiliary aid, service or accommodations in order to participate in Extension Programs are encouraged to contact the Program Coordinators at least one week in advance of the program to determine how reasonable accommodations can be made.

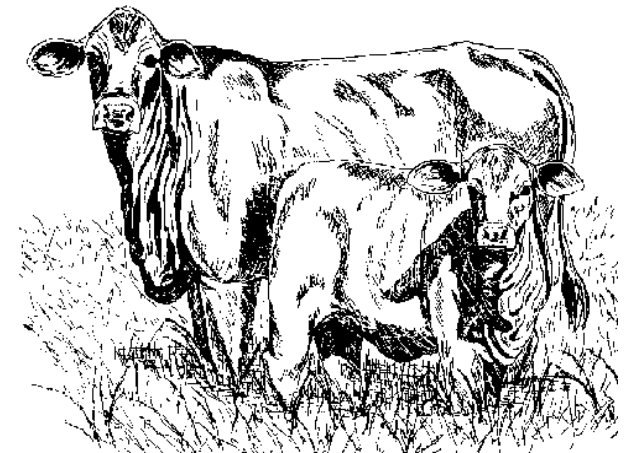
Educational programs conducted by Texas Cooperative Extension serve people of all ages regardless of socioeconomic level, race, color, sex, religion, handicap or national origin. Issued in furtherance of Cooperative Extension Work in Agriculture and Home Economics, Acts of Congress of May 8, 1914, as amended, and June 30, 1914 in cooperation with the United States Department of Agriculture, Edward G. Smith, Texas Cooperative Extension, The Texas A&M University System.



in cooperation with

Texas A&M
University
Kingsville

Youth Cow Camp 2007



July 5-7, 2007
Kingsville, Texas

**Texas Cooperative
Extension
Texas A&M Kingsville
Youth Cow Camp '07
July 5-7, 2007**

Texas leads the nation in beef production as well as ranking number 1 in the value of all cattle and calves, cattle on feed, calf crop, all cows, and many other categories. If you are interested in beef production, want to learn as much about the industry as possible and have fun while learning, Cow Camp may be for you.

The Texas Cooperative Extension in cooperation with Texas A&M University-Kingsville will be hosting a three-day camp for high school students (ages 15-18). The camp is designed to educate youth about one of the largest industries in the world, beef production.

Cow Camp participants will be housed on the campus of Texas A&M University Kingsville in the heart of South Texas cow country. Day time activities will include tours of area working ranches (including the famous King Ranch), feedyards, an auction barn, and a beef slaughter/processing facility. Participants will have ample opportunity for "hands on" learning, including proper performance of basic management and processing practices. TAMUK Animal Science faculty, Texas Cooperative Extension personnel, ranch managers, order buyers, feedlot managers, packers, and other industry representatives and leaders will be the instructors.

There will be a total of 25 cow camp participants from throughout Texas. Cow Camp is not limited to 4-H or FFA members, any young person that meets the age requirement is encouraged to apply. Applications must be turned in no later than June 1 in order to be considered. All applications will be evaluated by a steering committee

and all applicants will be notified of their acceptance status by June 18. Registration fee will be due upon acceptance.

There is a fee for Cow Camp. Each participant will pay \$200 which will cover the cost of meals, lodging, food and drinks, and supplies. Successful applicants are encouraged to solicit all or part of the tuition fee from local cattle producers' associations and other industry related businesses or groups.