



INSECTS AND WEEDS IN FOCUS

ROUTE 2, BOX 589 - CORPUS CHRISTI, TX 78406

ROY D. PARKER
EXTENSION ENTOMOLOGIST
PHONE: 361-265-9203

JOHN E. BREMER
EXTENSION WEED SPECIALIST
PHONE: 361-265-9203

Web site: <http://entowww.tamu.edu>

<http://agfacts.tamu.edu/~rparker/>

VOL. XXVI NO. 3

ENTO/WS

May 10, 2001

- ★ COTTON
- ★ CORN
- ★ SORGHUM
- ★ INTERESTING INSECTS
- ★ HOW WELL DO YOU KNOW YOUR HERBICIDES?
- ★ LULING FOUNDATION ANNUAL FIELD DAY

COTTON



Fleahopper numbers have exceeded the economic treatment threshold in many Coastal Bend fields but not in all areas. They remain very low with no treatments being required in numerous fields, especially those in open row crop land. Smooth leaf cotton varieties are most susceptible to damage and I believe fleahoppers should be monitored until early bloom; 10-15 fleahoppers per 100 plant terminals is considered economically damaging.



Aphids continue to cause some concern but in most cases their numbers have not remained high enough (50/leaf) long enough to result in economic yield loss. Treatments for aphids cannot be justified where only scattered spots have noticeable aphid damage. Also, close examination of the current situation reveals active parasitic wasps and predators. Many fields in the Corpus Christi area are expected to have a decline in aphids over the next 72 hours (in fields where insecticides have not been applied).



Boll weevil numbers remain very low within the boll weevil eradication area with higher numbers generally being caught in pheromone traps near areas outside the eradication zone. Although treatments are being applied based on single weevil captures, I expect his activity to decline as fields reach the bloom stage due to continued reduction in trap captures. In late June or July, I expect some boll weevils will be captured as the second and third generations emerge. RDP

CORN

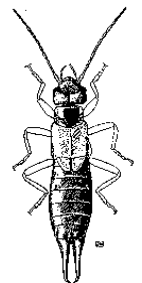
Mexican corn rootworm larval feeding should be reaching peak activity now, with maximum damage occurring during the first two weeks of May. RDP

SORGHUM

The yellow sugarcane aphid infestation is declining in southern Coastal Bend fields. Actually, it never reached economically damaging numbers in the fields I examined. Generally, all that remains are some lower yellowed leaves. Greenbug numbers are very low at this time but their numbers may increase over the next two week period. However, where corn leaf aphids were present in plant whorls, many predators and parasites have increased to high numbers and may keep greenbug numbers down. Corn leaf aphid infestations did not last long in plant whorls before being dramatically reduced by predators, parasites and diseases. Some signs of whorl feeding caterpillars have been observed but, again, their numbers were reduced by a wasp parasite (the parasite's cocoons have been observed in many fields). RDP

INTERESTING INSECTS

The insect order Dermaptera (derm=skin; ptera=wings) contain the earwigs. These insects are elongated, slender, somewhat flattened and contain forcep-like cerci at the end of the abdomen. Earwigs do not bite, but, if handled, will attempt to pinch with their cerci. Larger earwigs, especially males, can inflict a painful pinch. Twelve of the 22 North American earwig species were introduced from Europe. The 22 species are contained in six families. Adults may be winged or wingless, with one or two pairs of wings. If winged, the front wings are short and leathery. Hind wings, when present, are membranous and at rest are folded beneath the front wings with only their tips projecting.



Earwigs usually hide during the day in cracks, crevices, under bark and in debris. They feed chiefly on dead and decaying vegetable matter, but some may feed in living plants and a few are predators. Females usually lay eggs in clusters and these eggs are guarded by the female until hatch. Many of our local species have glands from which a foul-smelling fluid is emitted. Some species can squirt this fluid 75-100 mm. The name "earwing" is derived from an old superstition (without foundation) that these insects enter people's ears. RDP

HOW WELL DO YOU KNOW YOUR HERBICIDES?

With so many "new herbicide" names becoming available each year, producers may become confused and/or surprised to learn that many control weeds the same way (mode of action). This is not to say that they are necessarily the same chemically. When considering long term affects of weed resistance and potential carryover problems, buyers should pay close attention to mode-of-action.

The information from Iowa State may help explain weed control situations in your field from year to year. The web site is:
<http://www.weeds.iastate.edu/reference/moa.pdf> JEB

The Luling Foundation Annual Field Day
Agenda for Thursday May 17, 2001

- 7:30 – 8:30 AM Registration
- 8:45 Farm Tour Leaves for Programs
- 9:00 "Conservation Tillage Demonstration" Presented by Charles Stichler, Associate Professor and Extension Agronomist
- 10: 00 "Pecan Bottom Management" Presented by Dr. Larry Stein, Professor and Extension Horticulturist
- 11:00 "No-Till Farming" Presented by James Smart, Ph.D., Research Agronomist
- 12:00 PM The Luling Foundation Scholarship Program

View our newsletter earlier on the internet on the TPMA website (<http://www.tpma.org/>) by selecting "IPM newsletter" on the drop-down menu by going to "Coastal Bend" and "go". Another site is <http://agfacts.tamu.edu/~rparker>. Also pest management information is available at www.txaac.org.

 Educational programs conducted by the Texas Agricultural Extension Service serve people of all ages regardless of socioeconomic level, race, color, sex, religion, handicap or national origin. The information given herein is for educational purposes only. References to commercial products or trade names is made with the understanding that no discrimination is intended and no endorsement by the Cooperative Extension Service is implied.

- 12:15 Lunch catered by Frank Guenther
- 1:00 "The Future of the Meat Goat Industry" Presented by Warren Thigpen CEA, Bandera County
- 1:30 "Vac 45 Cattle Program" Presented by L.R. Sprott, Professor and Extension Beef Cattle Specialist
- 2:00 "Weather Patterns" Presented by Joe Baskin, Hydrometeorological Technician, Nation Weather Service
- 2:30 "Beefmaster Branded Beef Program" (Nolan Ryan Tender Aged Beef) Presented by Charlie Bradbury, CEO
- 3:00 "Wildlife Management" Presented by Len Polasek, Wildlife Biologist, Texas Parks and Wildlife

3 General CEU Hours Commercial, Non-Commercial, & Private

To help us in preparation for the meal, please **RSVP** to you The Luling Foundation at 830/875-2438 by **May 11th**

"Individuals with disabilities who require an auxiliary aid, service or accommodation in order to participate in the meeting are encouraged to contact The Luling Foundation at 830/875-2438 to determine how reasonable accommodations can be made."

The Luling Foundation
523 S. Mulberry Avenue, Luling, TX 78648
Phone (830)875-2438 Fax (830)875-3138
Email: iff@bcsnet.net